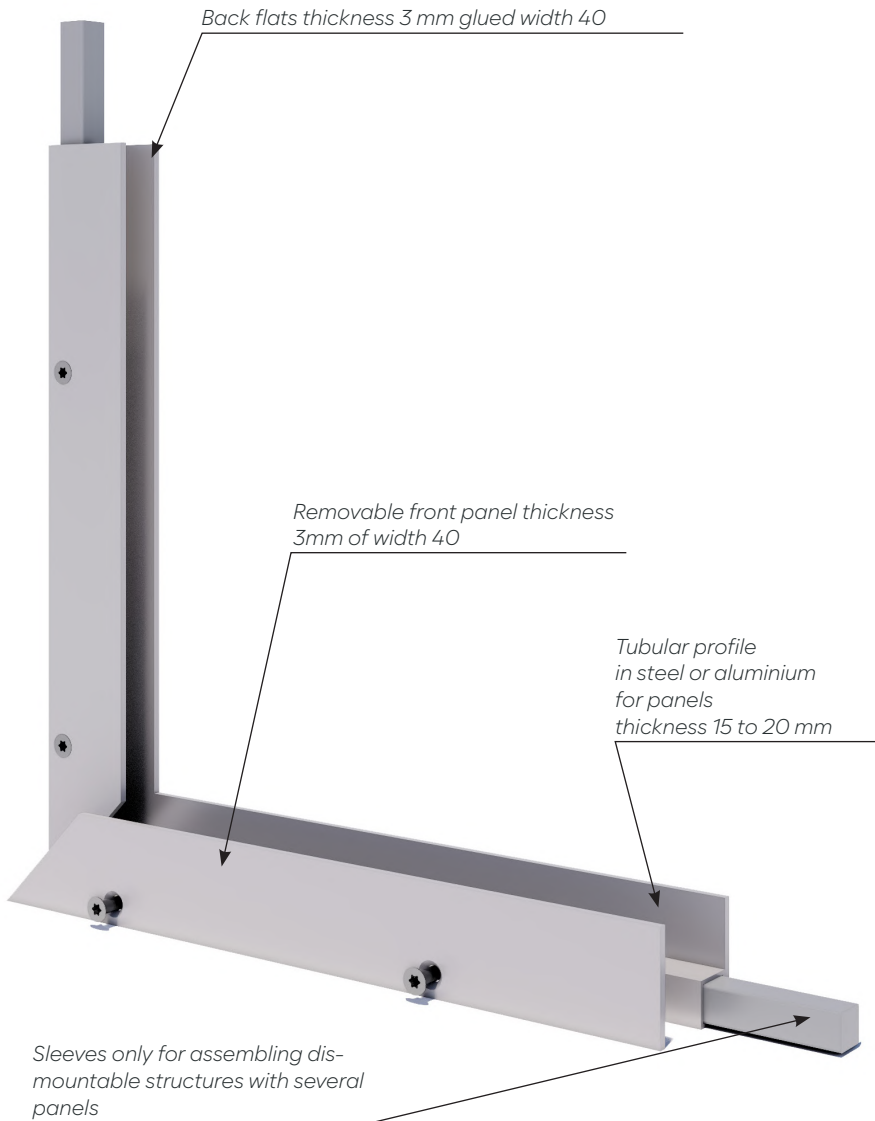


DACRYL<sup>®</sup>



**STRAIGHT TUBULAR FRAME:  
SINGLE PANEL**  
technical drawing C-A

# TUBULAR SYSTEM: DETAILS AND FINISHES



## Dimensions

- Square tubular structure in steel

for Dacryl® 15 mm thick:  
16 × 16 mm

for Dacryl® th. 18 and 20 mm :  
20 × 20 mm

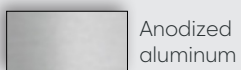
- Square tubular structure aluminium or stainless steel (wet rooms)

20 × 20 mm only

- Closing dishes  
width 40 mm / thickness 3 mm

- Finishing plates  
width 20 mm / thickness 2 mm

## Frame finishes



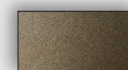
Anodized aluminum



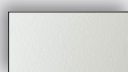
Black RAL 9005 Epoxy



Grey epoxy RAL 7016



Anodic Bronze epoxy



White RAL 9010 Epoxy

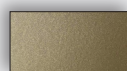


Gold Pearl epoxy

Other finishes on quotations

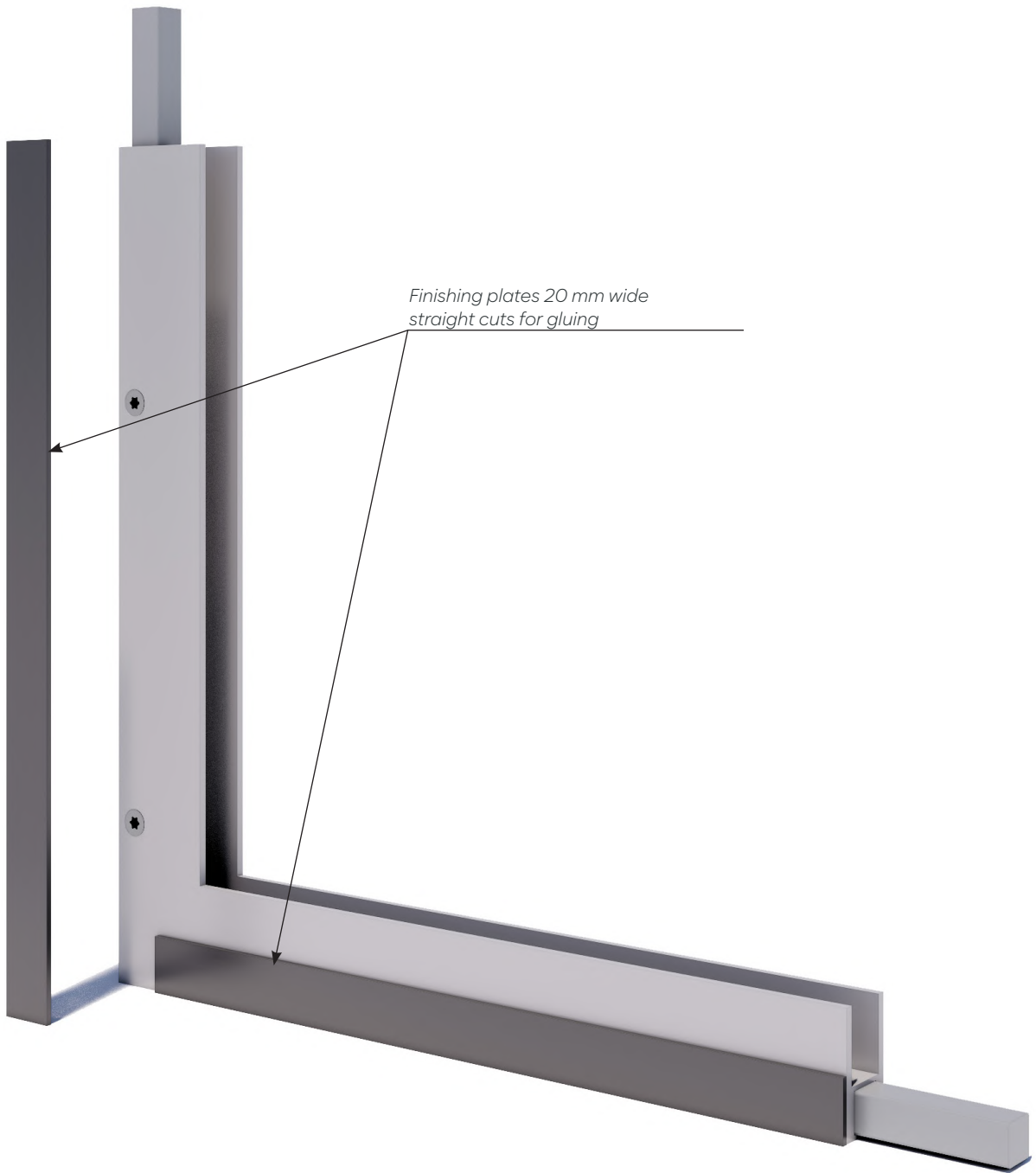


Clear Grey epoxy RAL 9006

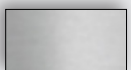


Steel Bronze epoxy

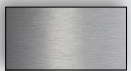
# TUBULAR SYSTEM: DETAILS AND FINISHES



## Finishing dishes



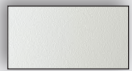
Anodized  
aluminum



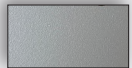
Brushed  
aluminium



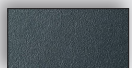
Black RAL  
9005 Epoxy



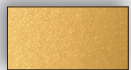
White  
RAL 9010 Epoxy



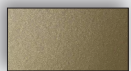
Clear Grey epoxy  
RAL 9006



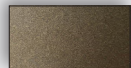
Grey epoxy  
RAL 7016



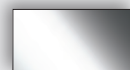
Gold Pearl  
époxy



Steel Bronze  
epoxy



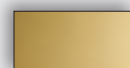
Anodic Bronze  
epoxy



Stainless steel  
Mirror polished



Stainless steel  
Brushed



Brass  
Polished



Brass  
Brushed

# STRAIGHT TUBULAR FRAME: SINGLE PANEL

Technical drawing ref. C-A



*Straight tubular frame, finish: Gold epoxy*

## Uses

- Partition wall straight / verse
- Impost
- Wall application

## Bindings

- Floor-ceiling
- Floor - wall
- Wall sconce

## Dimensions

- Square tubular structure  
in steel

for Dacryl® 15 mm thick:  
16 × 16 mm

for Dacryl® th. 18 and 20 mm :  
20 × 20 mm

- Square tubular structure  
aluminium or stainless steel (wet  
rooms)

20 × 20 mm only

- Closing dishes  
width 40 mm / thickness 3 mm

- Finishing plates  
width 20 mm / thickness 2 mm

## Deliverables

Delivered pre-assembled:

- Dacryl® panel inserted in tubular frame for transport & installation
- LED lighting with welded wire outlet, in roll ready to lay and connect
- Power supply 220 V for 12v/24v LED lighting
- Finishing dishes delivered separately, ready to glue

# STRAIGHT TUBULAR FRAME: SINGLE PANEL

Technical drawing ref. C-A

## Description of deliverables

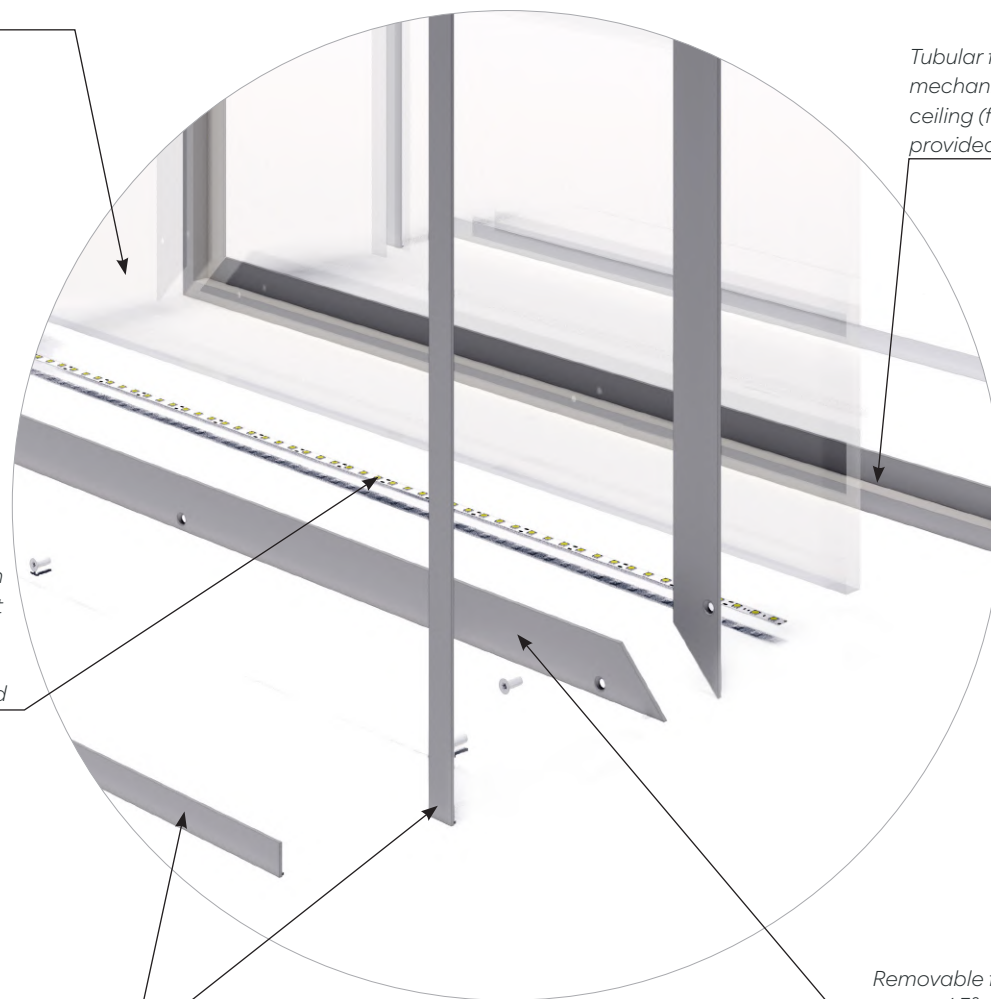
*Dacryl® panel delivered in the frame for transport and to be removed for installation of the frame.*

*Tubular frame to be fixed mechanically floor/wall/ceiling (fixing screws not provided)*

*Prepared LED ribbon lighting with wire exit welded / delivered in rolls ready to install and to be connected*

*Finishing dishes straight cuts to be glued*

*Removable front plates cuts at 45° th 3 mm width 40  
Mechanical mounting provided*



# STRAIGHT TUBULAR FRAME: SINGLE PANEL

Technical drawing ref. C-A

*Tubular frame  
with dishes fixed  
backrests*

*Removable plates front  
panel th 3 of 40 mm  
width mechanical fixing*

*wire exit positioning  
according to project*

1

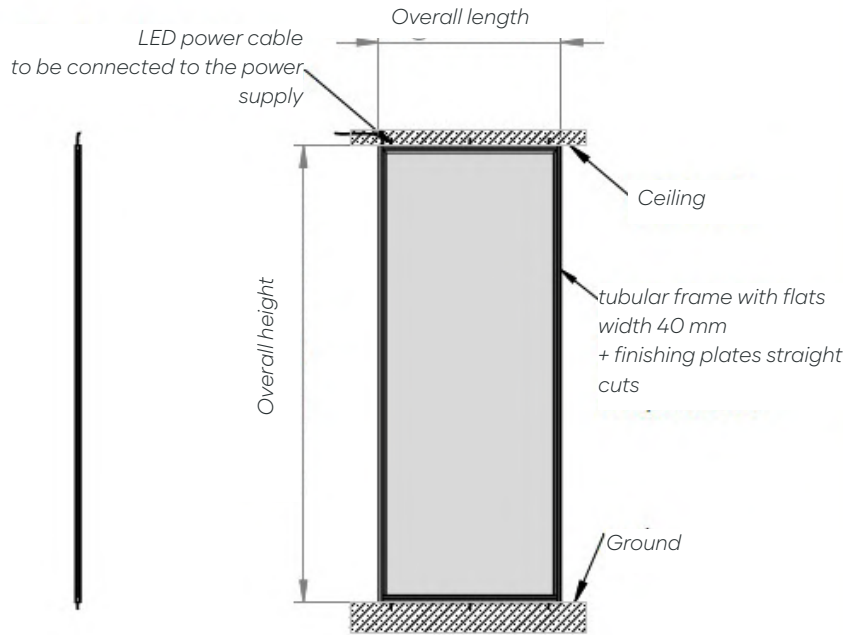
*Finishing dishes 20  
mm to be glued*

2

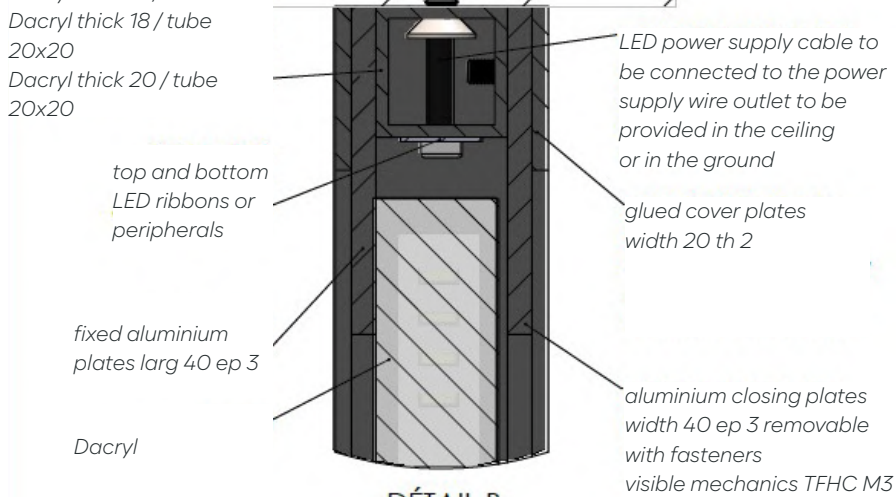
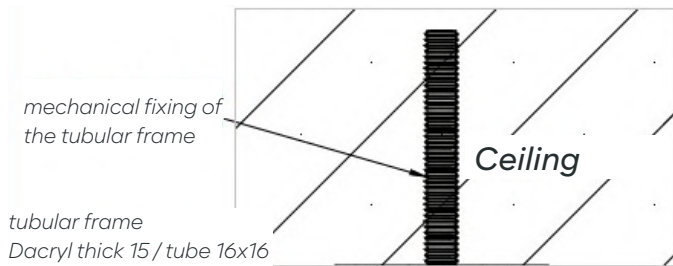
# STRAIGHT TUBULAR FRAME: SINGLE PANEL

Technical drawing ref. C-A

## General information



## Technical drawing Product description



DÉTAIL B  
SCALE 1 : 1

