

DACRYL[®]

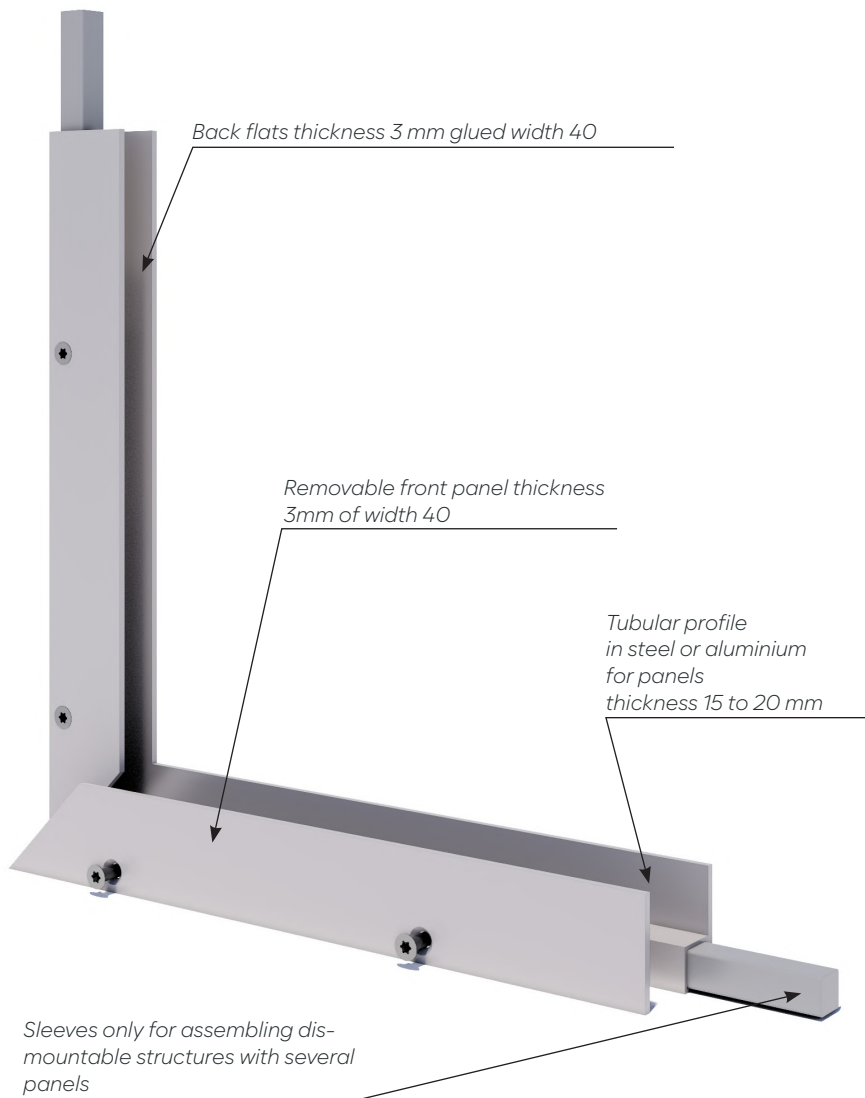


SLIDING DOOR

technical drawing R-1

SLIDING DOOR: DETAILS AND FINISHES

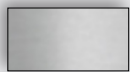
Opening frame



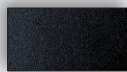
Dimensions

- Square tubular structure in steel
for Dacryl® 15 mm thick:
16 × 16 mm
- Closing dishes
width 40 in lower and 50 mm in upper part
- Finishing plates
width 20 mm / thickness 2 mm

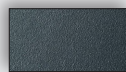
Frame finishes



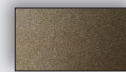
Anodized aluminum



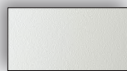
Black RAL 9005 Epoxy



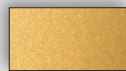
Grey epoxy RAL 7016



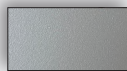
Anodic Bronze epoxy



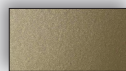
White RAL 9010 Epoxy



Gold Pearl epoxy



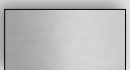
Clear Grey epoxy RAL 9006



Steel Bronze epoxy

Other finishes on quotations

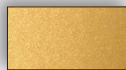
Finishing dishes



Anodized aluminum



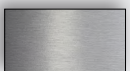
Black RAL 9005 Epoxy



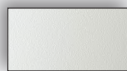
Gold Pearl epoxy



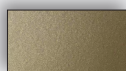
Stainless steel Mirror polished



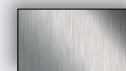
Brushed aluminium



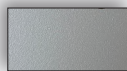
White RAL 9010 Epoxy



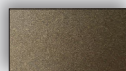
Steel Bronze epoxy



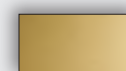
Stainless steel Brushed



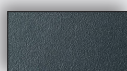
Clear Grey epoxy RAL 9006



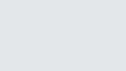
Anodic Bronze epoxy



Brass Polished



Grey epoxy RAL 7016



Brass Brushed

SLIDING DOOR

Technical drawing R-1



Sliding door, finish: brass

Uses

- In impost
- For 1 door
- Rail length 3m

Bindings

- Ceiling mounted rail or wall mounted

Option

- LED lightning
- Finishing dishes
- Dacryl® handle

Dimensions

- Maximum weight 80 kg rail for Dacryl thickness 15 mm
- Maximum weight 120 kg rail for Dacryl thickness 20 mm
- Closing dishes
width: 40 and 50 mm
thickness 3 mm
- Finishing dishes
width: 20 mm
thickness 2 mm

Our systems can be adapted to all other brands of sliding rail systems (Scigno,...)

excluding glass clamps.

SLIDING DOOR

Technical drawing R-1

Description of deliverables

*Sliding rail to be fixed
Provide a welcome profile if laying in a
galandage.*

Castors



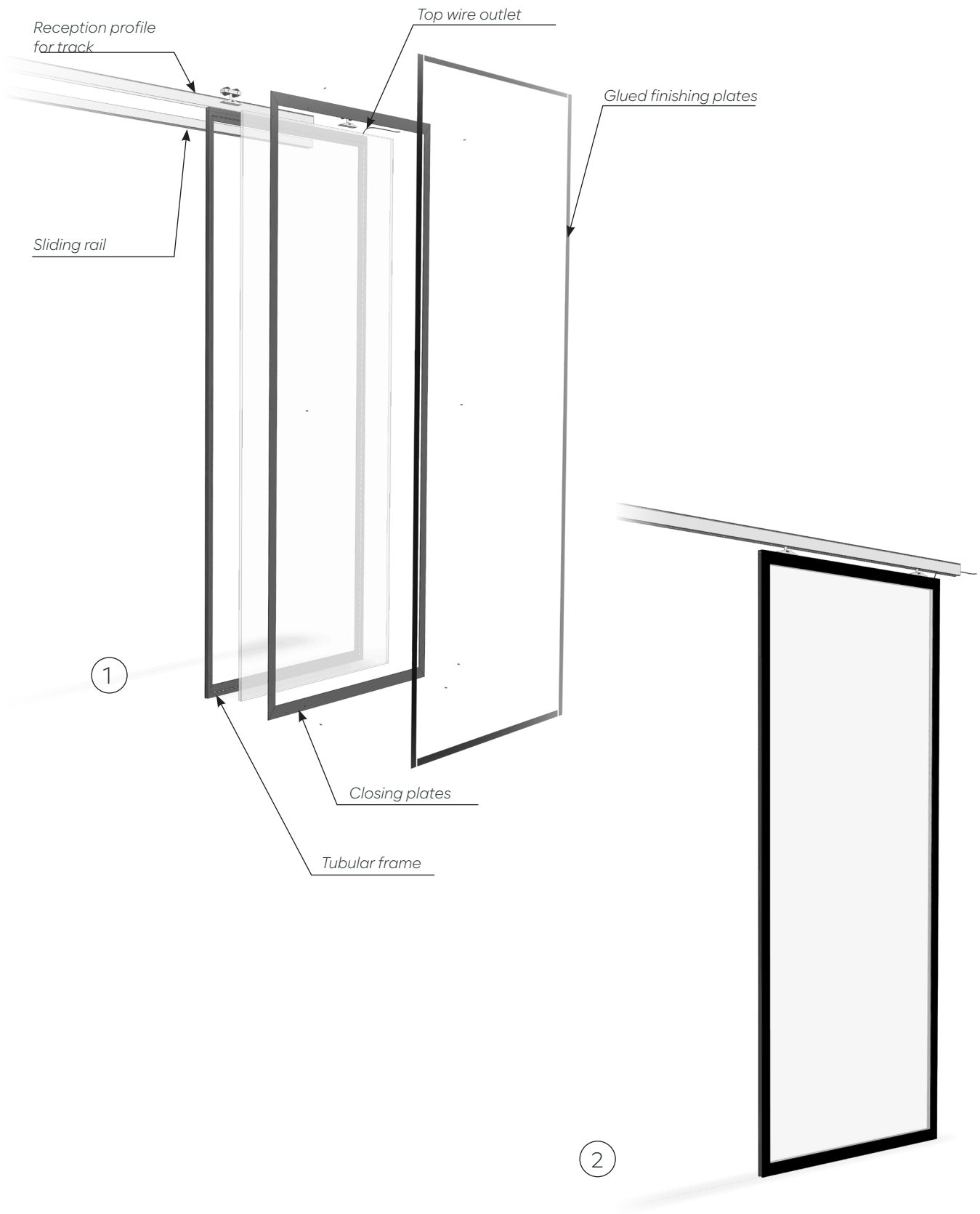
*Dacryl® in opening
tubular frame
with LED lighting and
wire outlet at the top*

*Welded fixing paste
for inserting castors on
frame*

*Finishing dishes 20 mm th. 2
straight cuts to be glued :*

SLIDING DOOR

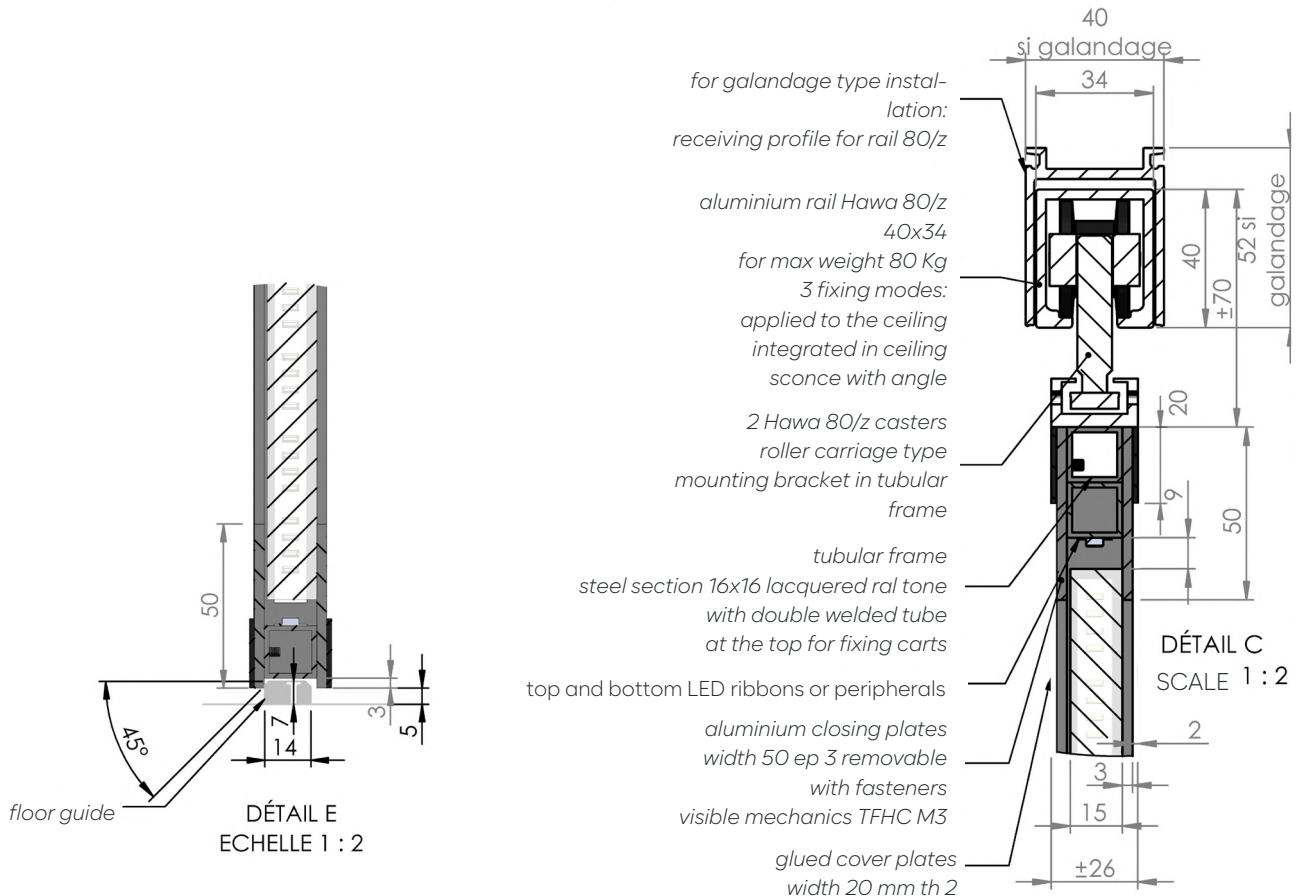
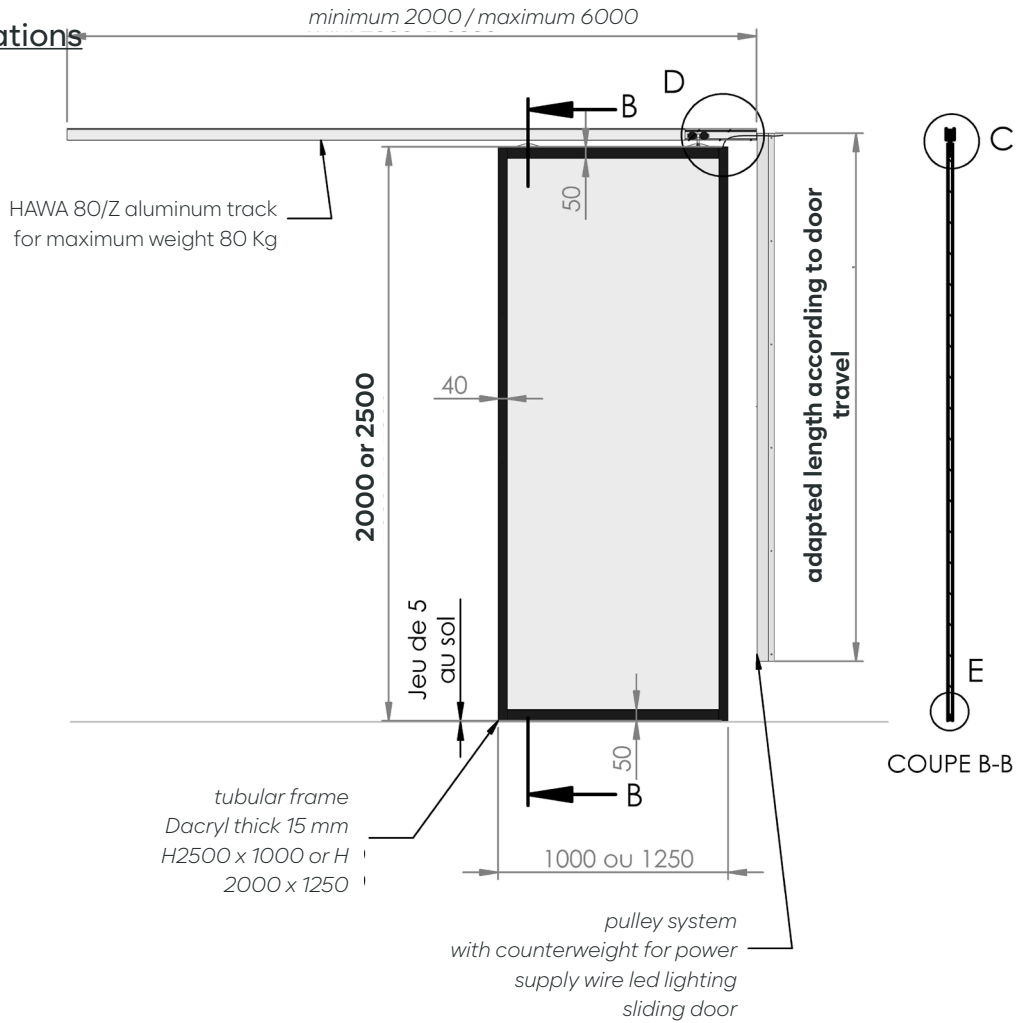
Technical drawing R-1



SLIDING DOOR

Technical drawing R-1

General informations



SLIDING DOOR: PULLEY AGAINST WEIGHT

Technical drawing CP

