



DACRYL[®]

DACRYL[®] STAIR CLADDING

technical drawing HM

DACRYL® STAIR CLADDING

Technical drawing HM



*Dacryl staircase cladding
Herb & Petal Walks*

Uses

- Stair cladding

Bindings

- Glue-down floor

Dimensions

- Stairs:
800 x 270 Th. 30 mm

Deliverables

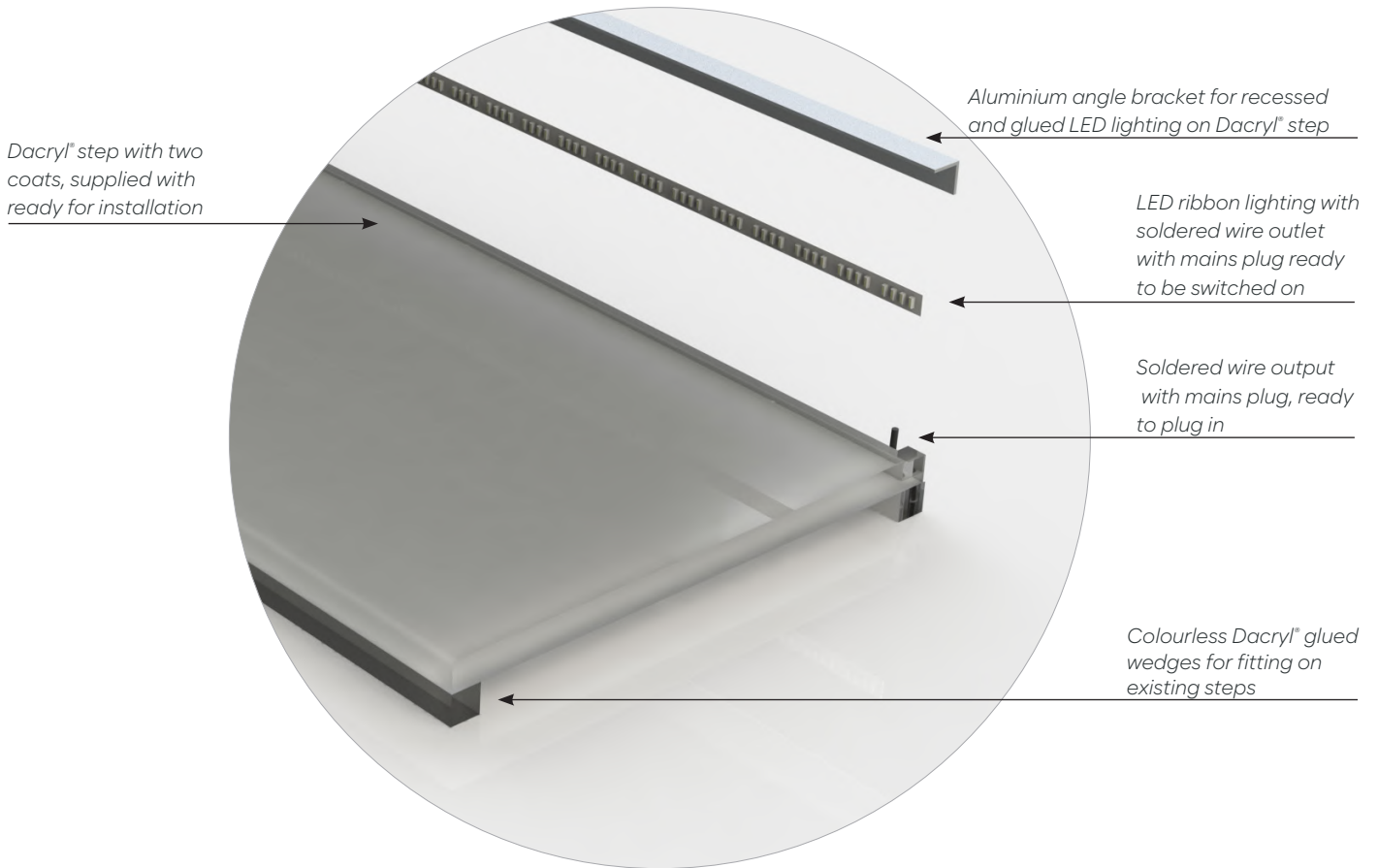
Delivered assembled and ready to install:

- Dacryl® steps to be glued on existing steps
- Dacryl® steps with 2 avec 2 anti-slip strips
- Wire outlet soldered on leds installed in aluminium angle bracket
- Remote 220V power supply for 12v-24v LED lighting with mains plug

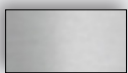
DACRYL® STAIR CLADDING

Technical drawing HM

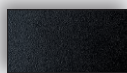
Description of deliverables



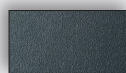
Aluminium L corner finishes



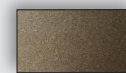
Anodized aluminum



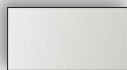
Black RAL 9005 Epoxy



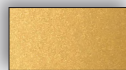
Grey epoxy RAL 7016



Anodic Bronze epoxy

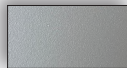


White RAL 9010 Epoxy

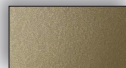


Gold Pearl epoxy

Other finishes on quotations



Clear Grey epoxy RAL 9006



Steel Bronze epoxy

