



DACRYL[®]

CLAUSTRA: PIVOT PANEL

technical drawing CS-P

CLAUSTRA : PIVOT PANEL

Technical drawing ref. CS-P



Uses

- Rotating partition on both sides

Bindings

- Floor/ceiling

Dimensions

- Square tubular structure
in steel 400 mm length
for Dacryl® 15 mm thick:
16 × 16 mm

- Veneered or stained wood casing
H80 × D 100 × W 500 mm

- Closing dishes
width 30 mm / thickness 3 mm

- Finishing plates
width 30 mm / thickness 2 mm

- Pivot with ball bearings

Deliverables

Delivered assembled:

- Dacryl® panel inserted in tubular frame for transport and installation
- LED lighting with soldered wire outlet, ready to connect
- Power supply 220 V for 12v/24v LED lighting
- Top and bottom wooden box for fixing pivots, electrical wiring and power supplies on top.
- Finishing dishes delivered separately, ready to glue

CLAUSTRA : PIVOT PANEL

Technical drawing ref. CS-P

Description of deliverables

Removable dishes
front panel 45° cuts 3 mm thick
width 30 (mechanical fixing provided)

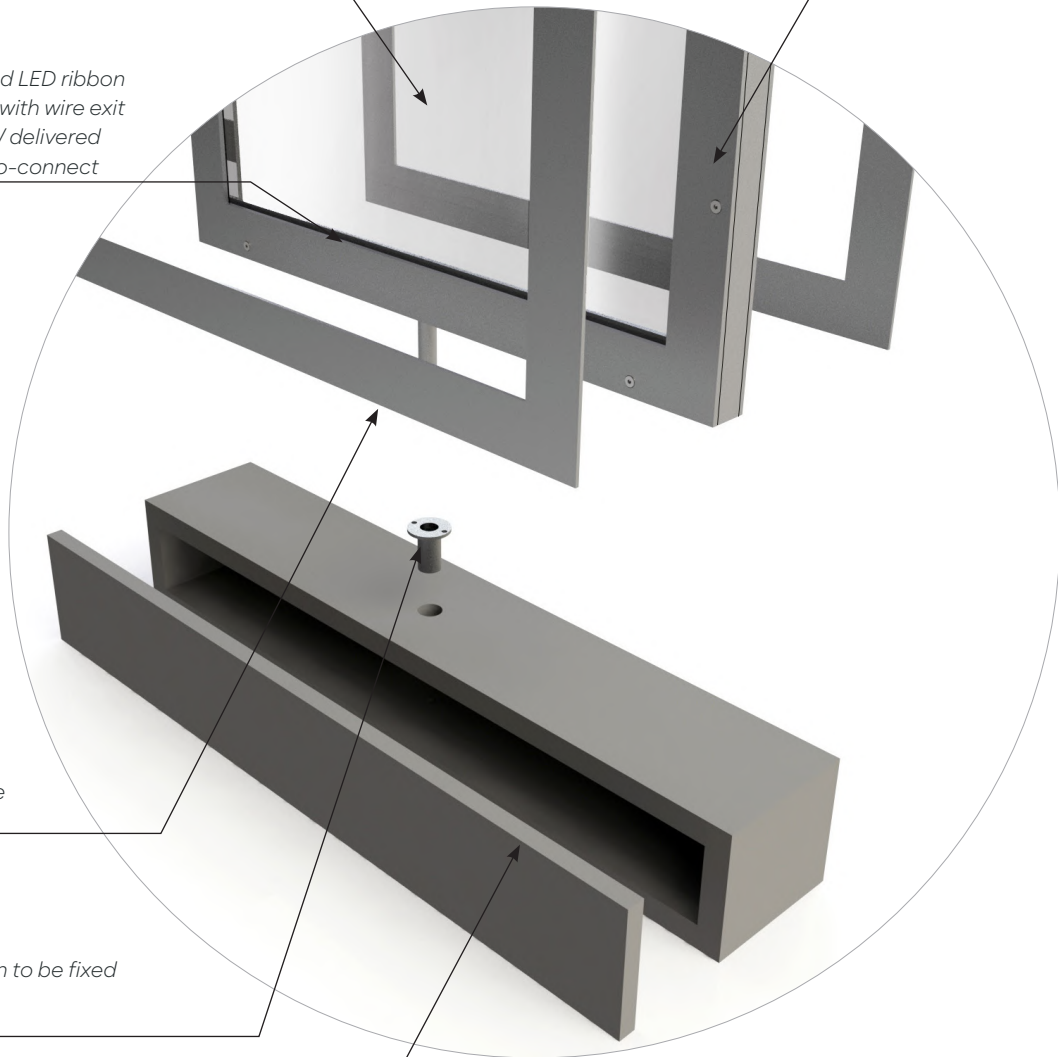
Dacryl® panel delivered in the frame for transport

Prepared LED ribbon lighting with wire exit welded / delivered ready-to-connect

Finishing dishes
straight cuts to be glued

Pivot up and down to be fixed with ball bearings in the lower part

Wooden box top and bottom
MDF with veneer or lacquer
H 80 x D 100 x W 500 mm
1 Removable face for wiring and fixing

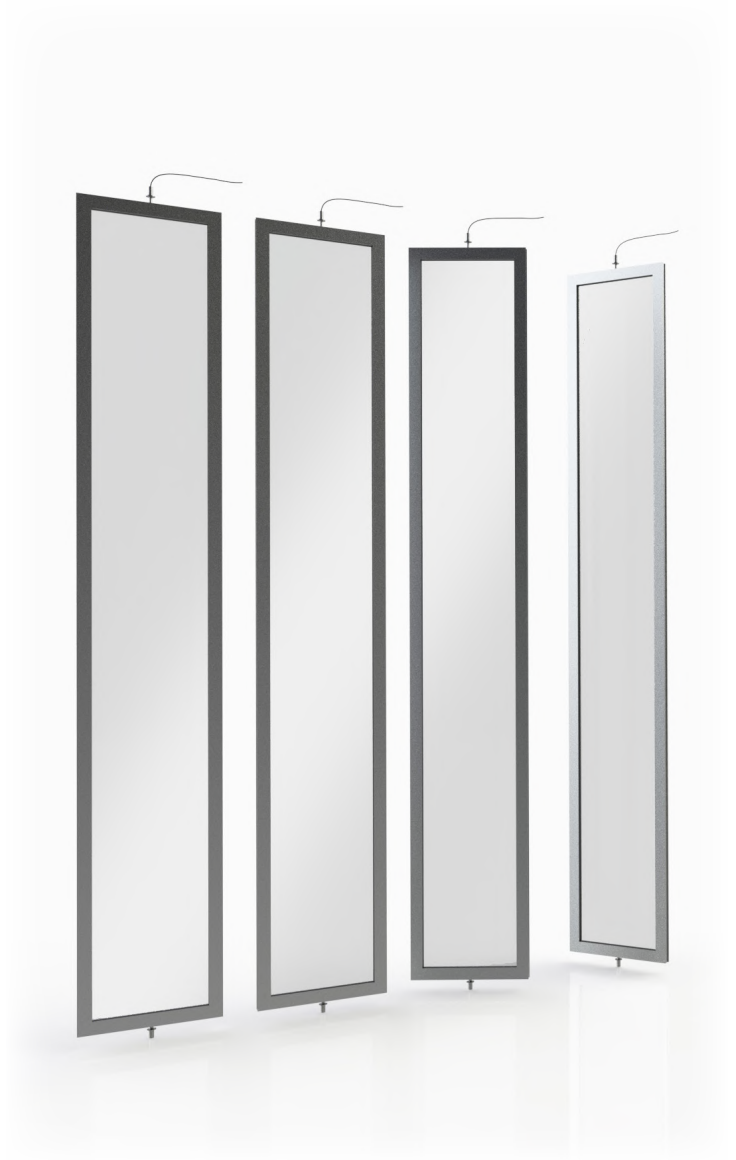


CLAUSTRA : PIVOT PANEL

Technical drawing ref. CS-P



① Single panel - ref CS-P

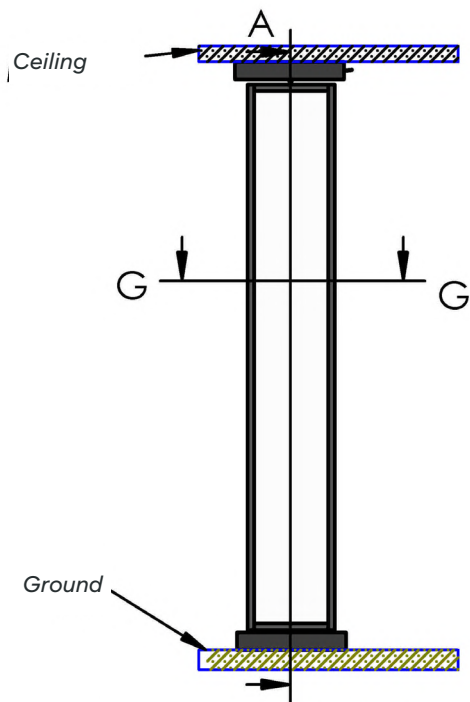


② Multiple version - ref CS-P

CLAUSTRA : PIVOT PANEL

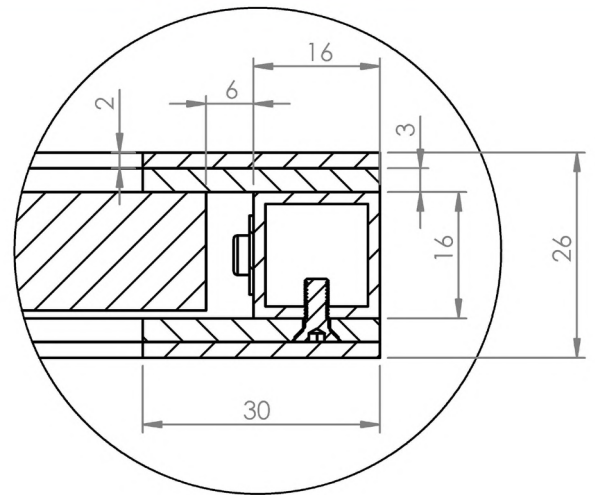
Technical drawing ref. CS-P

General informations

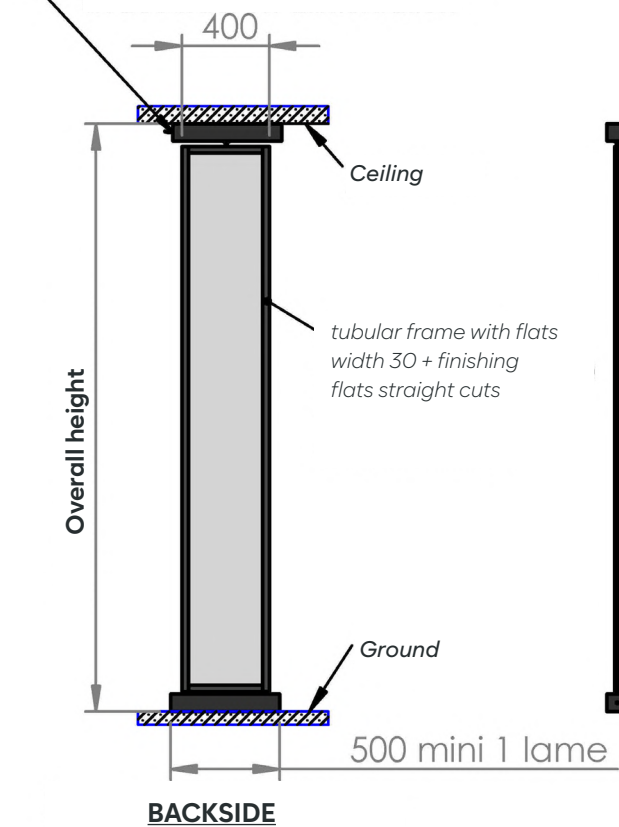


FRONT FACE

A



*power supply cable LED in high pivot
to be connected on power supply*



BACKSIDE

CLAUSTRA : PIVOT PANEL

Technical drawing ref. CS-P

Technical plan product description

