

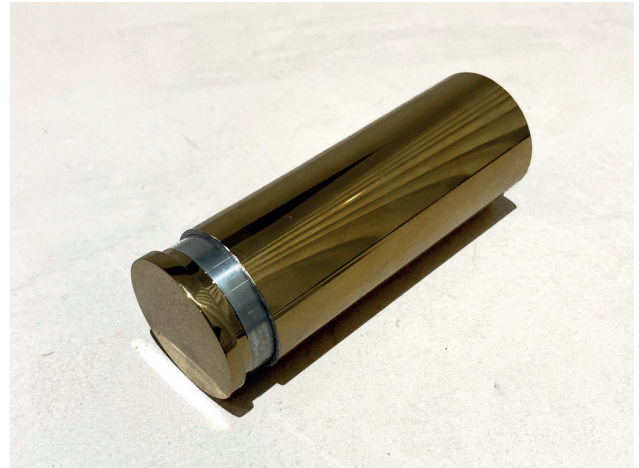
# HANDRAIL SLEEVES AND END CAPS

Technical drawing RD



# HANDRAIL SLEEVES AND END CAPS

Technical drawing RD



## Uses

- For corner connections
- For led lightning insertion if luminous Dacryl® sticks

## Specifics

- Stainless steel / Chrome / brass matte or glossy finishes
- Mechanical fixing of the sleeve on handrail supports
- Fixing of the plug by fitting and gluing in a sleeve

- Fixation of the Dacryl® stick in sleeve by bonding

## Dimensions

- For Dacryl® sticks  $\varnothing 40$  mm :
  - \* tube sleeves  $\varnothing 38.1$  mm
  - \* End caps  $\varnothing 38.1$  mm
- For Dacryl® sticks  $\varnothing 50$  mm :
  - \* tube sleeves  $\varnothing 50.8$  mm
  - \* End caps  $\varnothing 50.8$  mm

## General informations

