

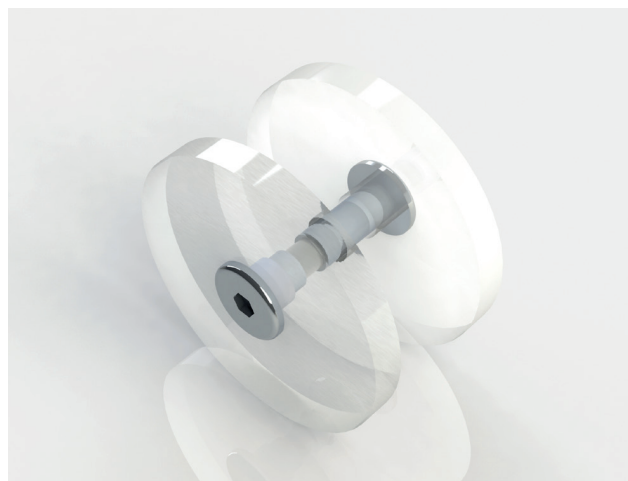
# **DACRYL<sup>®</sup>** **MOUNTING WASHER**

Technical drawing RD-1



# DACRYL® MOUNTING WASHER

Technical drawing RD-1



## Uses

- Joining piece for joining colourless plates
- Available for Dacryl® th 15 to 20 mm in round cut

## Specifics

- Inside faces frosted / outside polished
- Fastening with binding screws

## Option

- With inclusions

## Dimensions

RD-1 : round  $\varnothing$  55 mm / thickness 5 to 8 mm

## General informations

