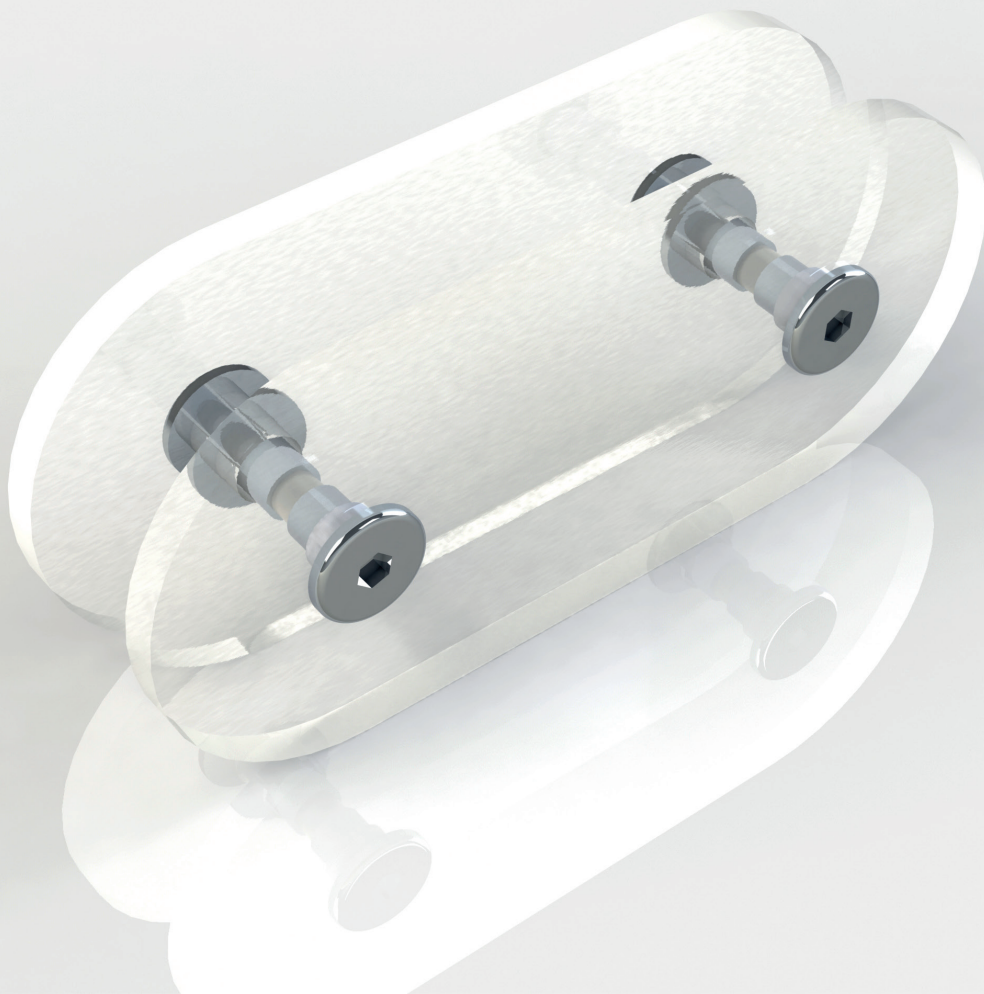


DACRYL® MOUNTING PLATE

Technical drawing PA



DACRYL® MOUNTING PLATE

Technical drawing PA



Uses

- Mounting piece for colourless straight plates

Specifics

- Fastening with binding screws
- Bending is possible

Option

- With inclusions
- Inside faces frosted / outside polished
- Square version

Dimensions

96.5 x 96.5 x H 55 / Thickness 5 to 8 mm

General informations

